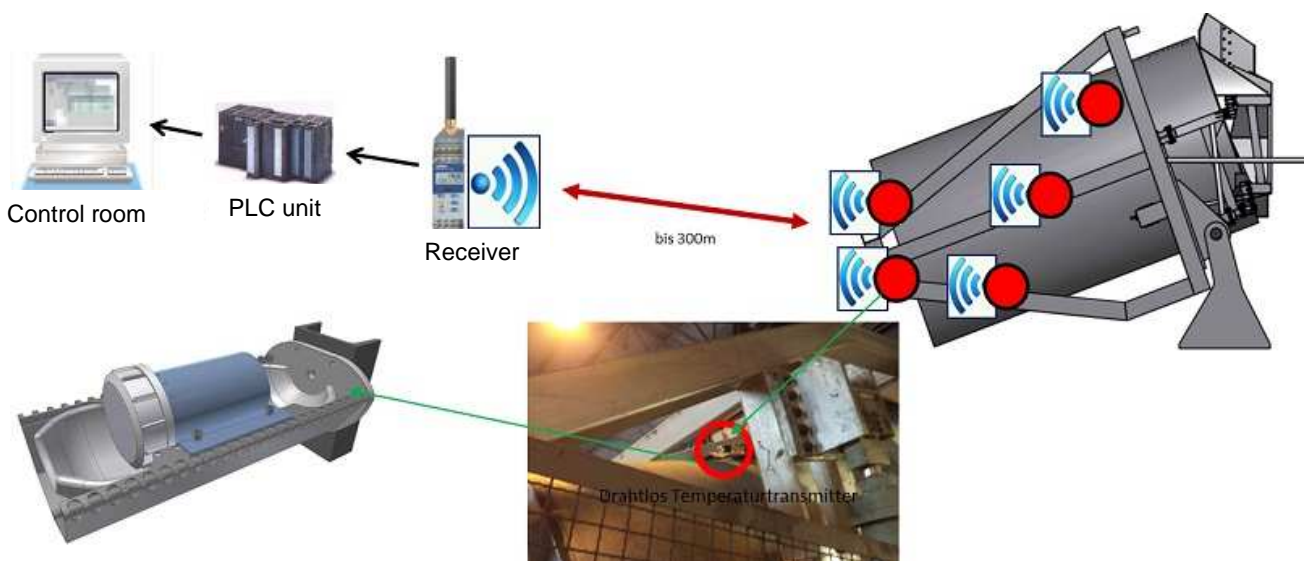


**Temperature measurement at rotary furnace
(example of application)**

Task of measuring:

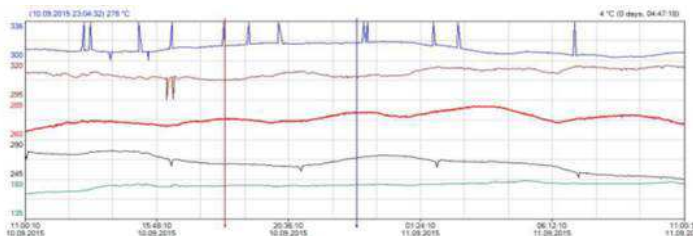
On a rotary furnace should, distributed over five different positioned areas, temperatures measured in the refractory lining. The measured values should be identified and recorded continuously, throughout the complete operating time. Given thru rotation of the furnace chamber, there is no cabling of the transducer possible.



Measurement result:

Even thru massive metal surrounding, the receiving and sending quality will not be affected. This is referable, that the measuring module thru a special functionality are designed flexible.

Measure protocol:



Contact: **Peter Geiwagner** (08677 / 884-190 or peter.geiwagner@fiwagroup.com)